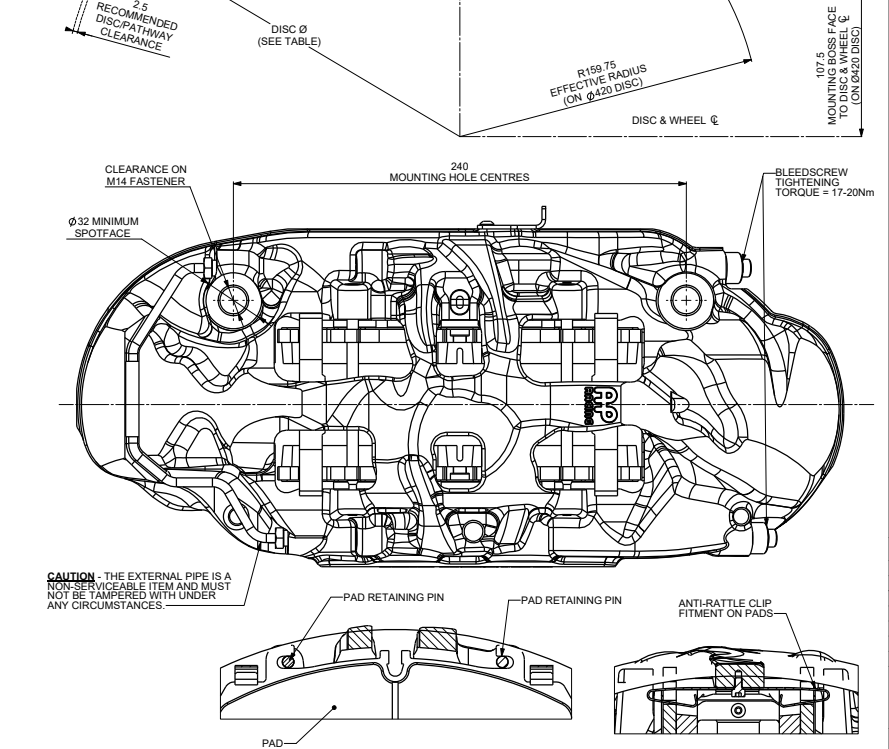
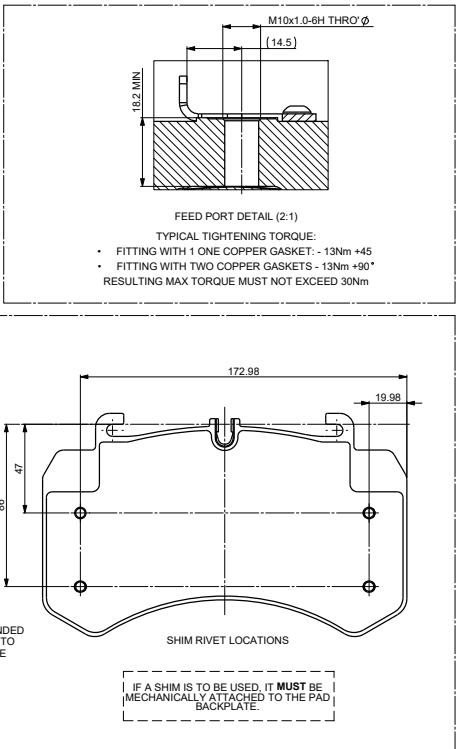
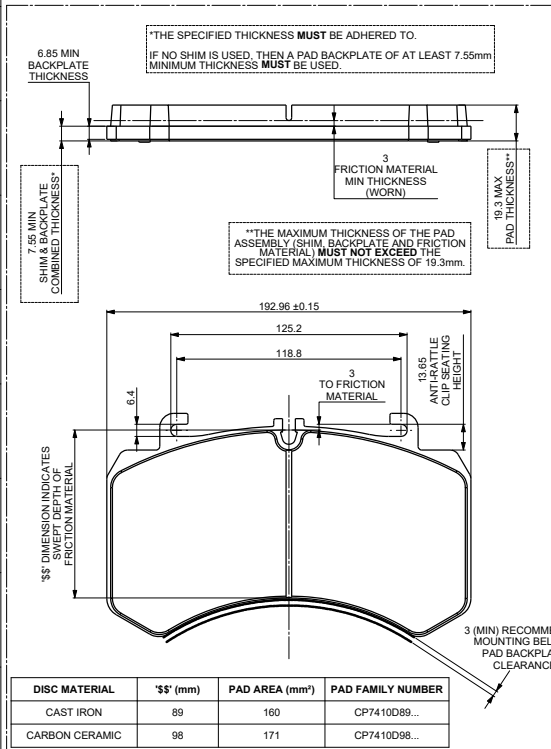
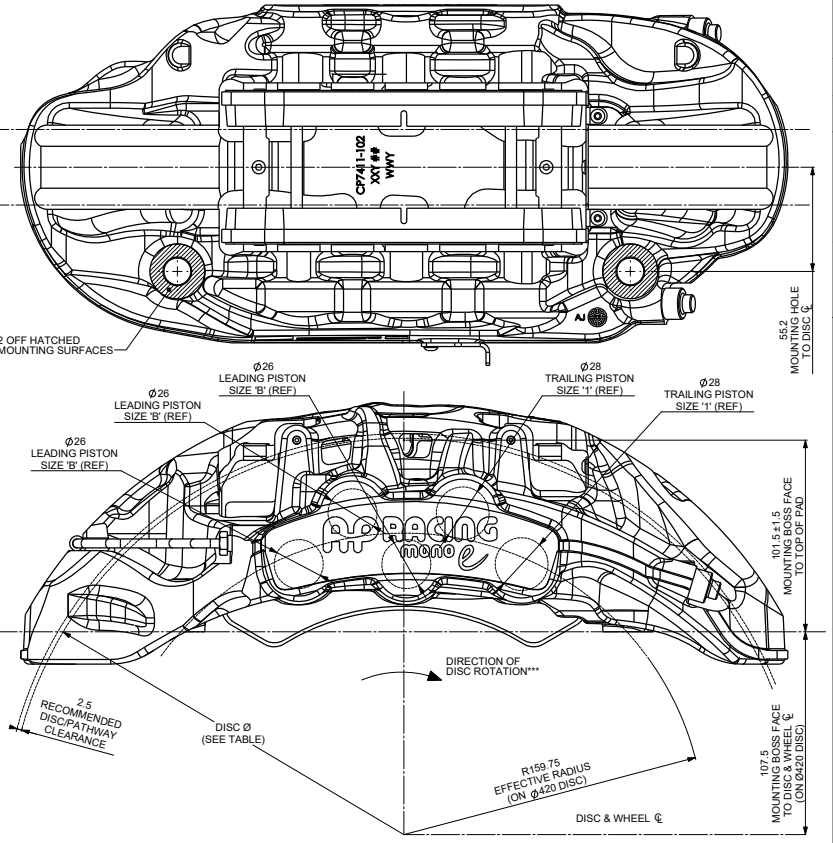
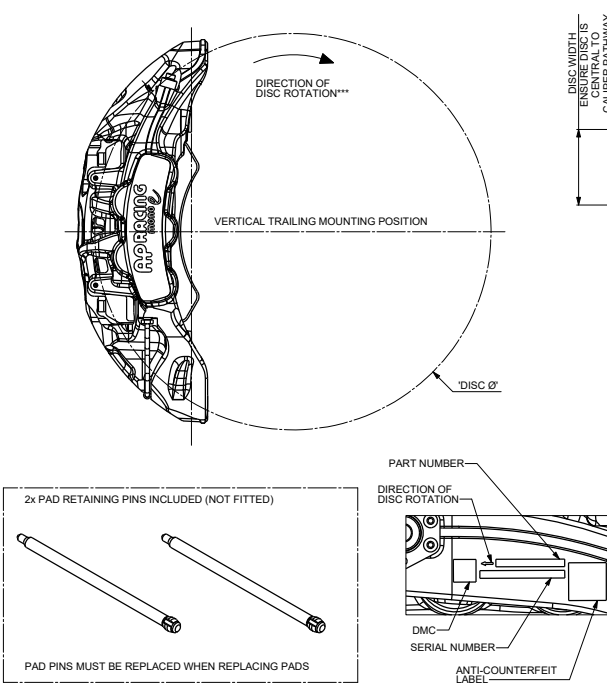


CALIPER SPECIFICATION	
PISTON AREA	28.25cm² (PER PAD)
	56.50cm² (TOTAL)
DISC DIAMETER	390mm - 420mm
DISC WIDTH	40mm
DISC WIDTH MIN (WORN CONDITION)	38mm (DIFFERENTIAL WEAR NOT TO EXCEED 1.00mm SIDE TO SIDE)
DISC ROTATION	ROTATING DISC MUST PASS SMALLEST PISTON FIRST***
MAX WORKING PRESSURE	SEE DATA SHEET P14.387 (AVAILABLE FROM AP RACING TECHNICAL DEPARTMENT)
MAX GVW (GROSS VEHICLE WEIGHT)	
DRY WEIGHT (LESS PADS)	5.52kg (EST)
DRY WEIGHT (INC. PADS)	6.65kg (EST)
PAD RETENTION	2 x FRICTION RETAINED PINS
RECOMMENDED WHEEL CALIPER CLEARANCE	4mm (MIN)
SEAL KIT	CP4525-BBB11
PAD RETAINING PIN KIT	CP7411-101
EVLV COMPLIANCE	ALL MATERIALS AND COATINGS COMPLY WITH END OF LIFE VEHICLES (2000/S/EC)

AVAILABLE PART NUMBERS	
PART NUMBER	DESCRIPTION
CP7411-2A###	RIGHT HAND TRAILING (BEHIND AXLE)
CP7411-3A###	LEFT HAND TRAILING (BEHIND AXLE)
CP7410D\$...	CP7410-1 NON-HANDED PAD
### = COLOUR CODE \$ = PAD SWEEP DEPTH	
FOR AVAILABLE COLOURS AND FURTHER TECHNICAL INFORMATION PLEASE REFER TO THE PRODUCT CATALOGUE, APRACING.COM OR CUSTOMER SERVICES	



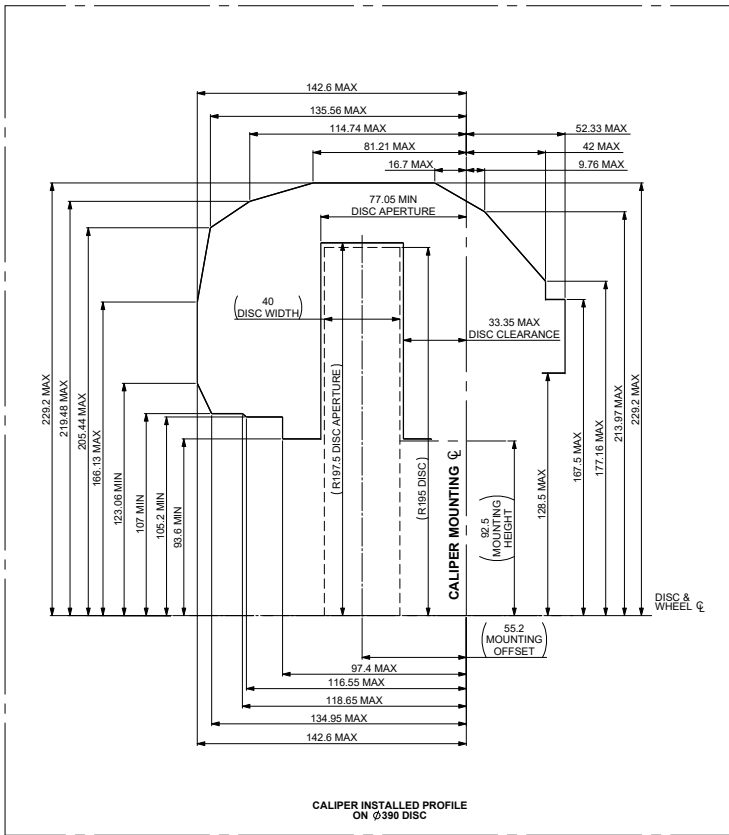
AP RACING

© AP Racing Ltd 2024

AP Racing
Wheler Road
Conventry
CV3 4LB
Tel: +44 024 7663 9595
Fax: +44 024 7663 9559
e-mail: sales@apracings.co.uk
Web site: http://www.apracings.com

ISSUE HISTORY		#	CRD	DETAILS
DATE & ECV NO	FIRST ISSUE			
07/04/2025 WF-002116_16	FIRST ISSUE	JAB		
11/04/2025 WF-002116_18	DISC DIAMETERS UPDATED. WAS 390 NOW 390-420. ON Ø390 DISC REMOVED FROM SWEEP DEPTH NOTE. 1" DIMENSION WAS ON Ø410 DISC NOW ON Ø390.	R2 C7 +20	JAB	
18/04/2025 WF-002116_20	DRAWING REDRAWN.	JAB		
23/04/2025 WF-002116_22	SHEET 1 172.88 DIM REALIGNED TO CORRECT LOCATION SHEET 2 77.35 MIN DISC APERTURE DIM ADDED.	D6 P4	JAB	
24/06/2025 WF-002116_29	SHEET 1 PAD PIN KIT PART NUMBER UPDATED WAS CP7410-150 NOW CP7411-101 PAD 138 DIMENSION TABLE ADDED PAD PART NUMBER UPDATED TO INCLUDE \$\$. CALIPER LASER ETCH LAYOUT REVISED DRAWING TITLE REVISED TO REMOVE 'CAST IRON SETUP'.	A1 K10 +21	JAB	

ALL DIMENSIONS IN MILLIMETRES:	DIMENSIONAL TOLERANCE
SCALE 1:1	ANGULAR TOLERANCE = ± 0.05°
DRAWN	SHEET 1 OF 2
APPROVED	J. BUSWELL
DERIVED FROM	J. HALEY
PROJECT NO.	WF-002116
CLASS	3
SECTOR	ROAD BRAKE
TITLE	TRAILING MONO-E HPK CALIPER
DRAWING NUMBER	CP7411-1CD



ISSUE HISTORY		GRD	INITIALS
DETAILS			
ISSUE	DATE & EON NO.		
1	1		
SEE SHEET 1 FOR ISSUE HISTORY.			
ALL DIMENSIONS IN MILLIMETRES.		DIMENSIONAL TOLERANCE ± 0.25 ANGULAR TOLERANCE $\pm 0.50^\circ$	
SCALE 1:1		SHEET 2 OF 2	
DRAWN		J. BUSWELL	
APPROVED		J. HALEY	
DERIVED FROM			
PROJECT NO.		WF-002116	
CLASS		3	
SECTOR		ROAD BRAKE	
TITLE			
TRAILING MONO-E			
CAST IRON SETUP HPK CALIPER			
DRAWING NUMBER		CP7411-1CD	